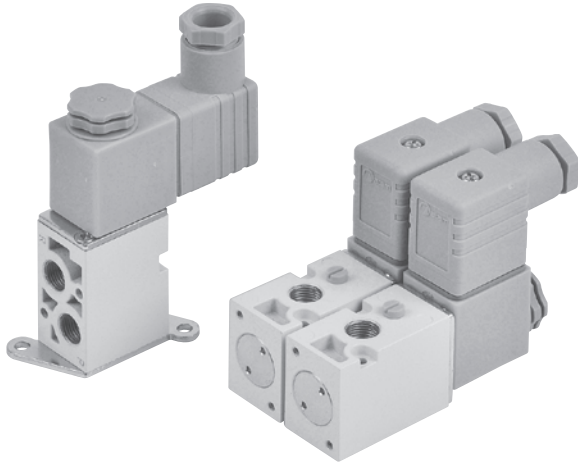


# MVSV-220 series

SOLENOID VALVE (DIRECT OPERATED TYPE)



## Specification

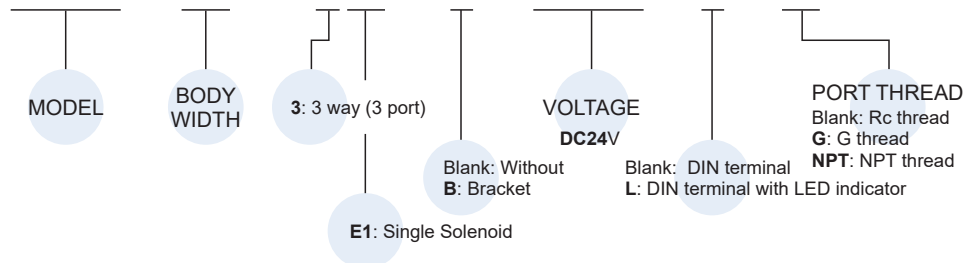
Model	3E1
Bore No.	6A
Port size	1/8
No. of port	3
No. of position	2
Medium	Air, low vacuum
Operating pressure range	-101 kPa ~ 0.7 MPa
Proof pressure	1 MPa
Effective orifice (mm <sup>2</sup> )	P→A: 5.2, R→A: 6.0 A→P: 6.2, A→R: 5.8
Response time (ms)	20
Ambient temperature	-5~+50°C (No freezing)
Voltage	DC24V
Power consumption (W)	7
Available voltage range	±10%
Insulation class	F class
Weight (g)	164 (with bracket: 181)

### Caution

- In the case of continuous energization, it is recommended to use NC/NO configuration in the design of the pneumatic circuit to avoid the temperature rise of continuous energization.
- For continuously energized situation, please contact us.

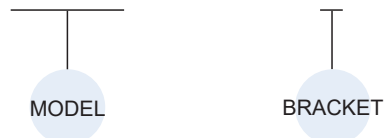
### Order example of valve

MVSV – 220 – 3E1 – B – DC24 – L – G

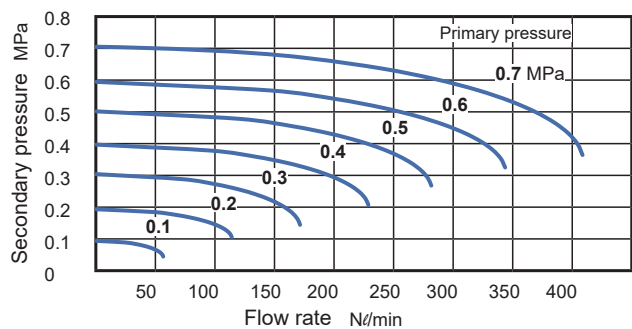


### Order example of bracket

MVSV – 220 – B



### Flow features



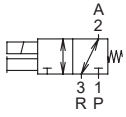
# MVSV-220 Dimensions / Mounting accessories



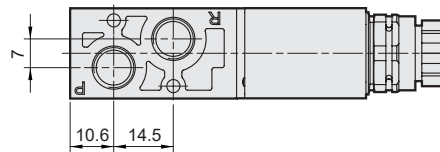
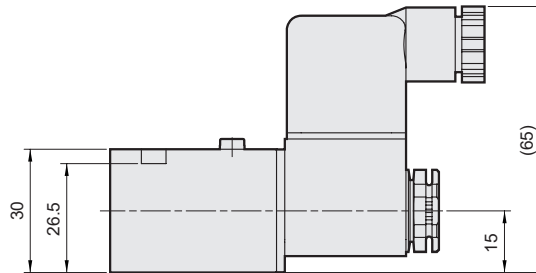
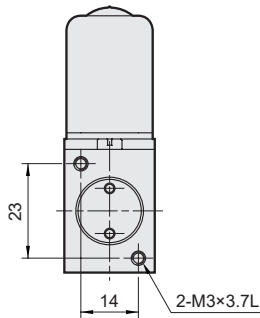
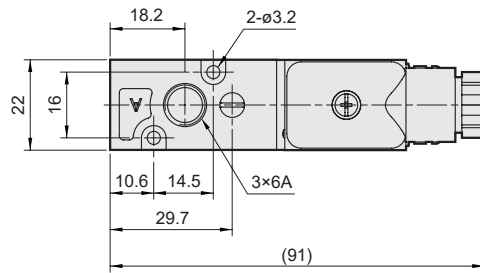
SOLENOID VALVE (DIRECT OPERATED TYPE)

Mindman

## MVSV-220-3E1



Port 1P: NC  
Port 2A: COM  
Port 3R: NO



## Mounting accessories

### MVSV-220-B

Bracket

